

# MP Manicotti soft - Accessori di fissaggio per piastra

Soft sleeves - Fixing accessories for plate



- Adatti per l'installazione su filtri con lato inferiore piastra portagelli inaccessibile

- Suitable for filters where access to the underside of the nozzle plate is not possible

#### Materiale

Material

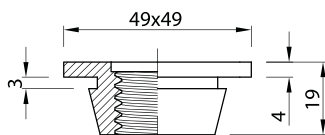
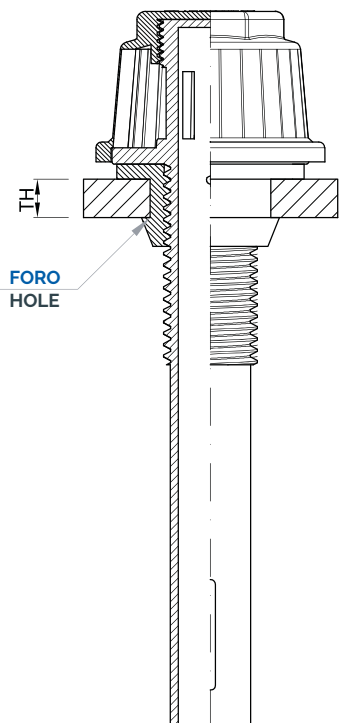
PVC

EPDM  
black

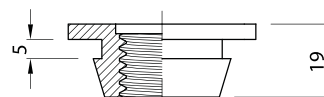
Modello Model	Spessore piastra Plate thickness mm	Filetto Thread	Foro piastra ø Plate hole ø mm	Ht - Altezza manicotto Ht - Sleeve height mm
MP03	3	15/16"W	31,5 - 32,0	19
MP05	5	15/16"W	31,5 - 32,0	19
		1 1/4"W	37,0 - 37,5	
MP7.5	7 - 8	15/16"W	31,5 - 32,0	19
		1 1/4"W	37,0 - 37,5	
MP10	10	15/16"W	31,5 - 32,0	22
		1 1/4"W	37,0 - 37,5	
MP15	15	15/16"W	31,5 - 32,0	26
		1 1/4"W	37,0 - 37,5	
MP25	25	15/16"W	31,5 - 32,0	36
		1 1/4"W	37,0 - 37,5	

#### ORDINE - ORDER

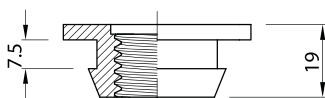
Modello Model	Filetto Thread	Materiale Material
MP10	15/16"W	PP



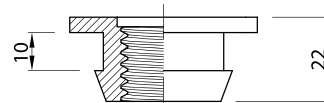
MP03



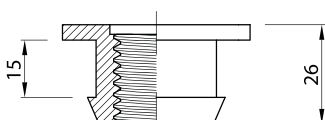
MP05



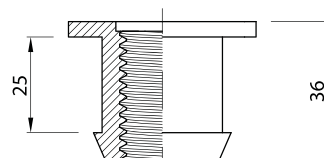
MP7.5



MP10



MP15



MP25

**I fori della piastra dovranno essere smussati per evitare danni all'articolo.**  
The plate holes must be chamfered to avoid item damage.

