

## STANDARD SWIVEL JOINTS

ZRA/ZRB/ZRC are standard swivel joints for manufacturing plants requiring product diversification. The fitting and adjustment of the joints can be done easily by tightening the hexagonal screw cap.

- Typical applications
  - Cleaning equipment used in pre-treatment for coating process.
  - Continuous casting cooling.
- Inlet thread size
  - 1/8", 1/4", 3/8", 1/2", 3/4"
- Outlet thread size
  - 1/8", 1/4", 3/8", 1/2", 3/4"
- Max working pressure
  - LP 21 bar
- Materials
  - B1 AISI 303 Stainless steel
  - B31 AISI 316L Stainless steel
  - T1 Brass

Code	RG poll	RF poll	L mm	A deg	WS mm	W g
ZRA 1212 xx YY	1/8"	1/8"	38	50°	22	57
ZRA 2525 xx YY	1/4"	1/4"	57			75
ZRA 2626 xx YY	1/4"	1/4"	67	60°	27	147
ZRA 3826 xx YY	3/8"	1/4"	67			150
ZRA 3838 xx YY	3/8"	3/8"	70			155
ZRA 5050 xx YY	1/2"	1/2"	74	40°	27	186
ZRA 7575 xx YY	3/4"	3/4"	92		40	468

## HOW TO MAKE UP THE PRODUCT CODE EX.: ZRA 1212 B1SB

ZRA 12 12 xx YY

CONNECTION • SB - BSP  
• SN - NPT

MATERIAL • B1 - AISI 303 Stainless steel  
• B31 - AISI 316L Stainless steel  
• T1 - Brass

OUTLET THREAD SIZE • 12 - 1/8"  
• 25 - 1/4"  
• 38 - 3/8"  
• 50 - 1/2"  
• 75 - 3/4"

INLET THREAD SIZE

Nozzle type	Inlet	Outlet
ZRA	Male	Female
ZRB	Female	Female
ZRC	Welded	Female

## TRIANGLE FLANGED SWIVEL JOINTS

ZRP triangular flanged swivel joints have a robust metallic structure, are easy to fit and adjust and are widely used in manufacturing plants requiring product diversification.

- Typical applications Cleaning equipment used in pre-treatment for coating process.  
Continuous casting cooling.
- Inlet thread size 1/8", 1/4", 3/8"
- Outlet thread size 1/8", 1/4", 3/8"
- Max working pressure LP 15 bar

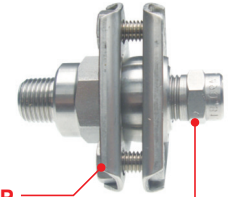
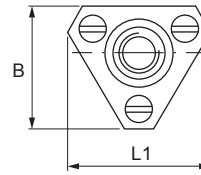
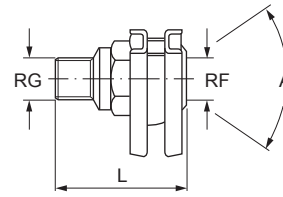
Code	RG inch	RF inch	L mm	B mm	L1 mm	A deg	W g
ZRP 1212 xx	1/8"	1/8"	30	40	35	50°	65
ZRP 2512 xx	1/4"	1/8"	32				92
ZRP 2525 xx	1/4"	1/4"	40	50	45	60°	140
ZRP 2538 xx	1/4"	3/8"	40				150
ZRP 3825 xx	3/8"	1/4"	40				150
ZRP 3838 xx	3/8"	3/8"	40				150

HOW TO MAKE UP THE  
PRODUCT CODE

EX.: ZRP 1212 B1

ZRP 1212 xx

- OUTLET THREAD SIZE
  - 12 - 1/8"
  - 25 - 1/4"
  - 38 - 3/8"
- INLET THREAD SIZE
  - 12 - 1/8"
  - 25 - 1/4"
  - 38 - 3/8"
- JOINT TYPE
  - B1 - AISI 303 Stainless steel
  - T1 - Brass
  - B3 - AISI 316 Stainless steel (optional)

ZRP  
Triangle flanged  
swivel joints

JBC Flat fan nozzle

ZRP Triangle flanged  
swivel joints

JBC Flat fan nozzle



SWIVEL JOINTS

( LARGE CAPACITY SWIVEL JOINTS ) **ZRQ**

## LARGE CAPACITY SWIVEL JOINTS

ZRQ series swivel joints are suitable for operating environments requiring large capacities and product diversification. Once set, they can be easily fitted and adjusted.

- Typical applications Cleaning equipment used in pre-treatment for coating process.  
Continuous casting cooling.
- Inlet / Outlet thread size 1", 1 1/4", 1 1/2", 2", 2 1/2"
- Max working pressure LP 9 bar
- Materials
  - B1 AISI 303 Stainless steel
  - B3 AISI 316 Stainless steel
  - T1 Brass

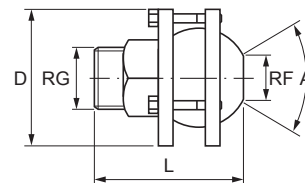
Code	RG inch	RG1 inch	RF inch	L mm	D mm	A deg	W kg
ZRQ 8080 xx	1"	-	1"	89	92	40°	1.8
ZRQ 8282 xx	1 1/4"	-	1 1/4"	130			2.1
ZRQ 8482 xx	1 1/2"	-	1 1/4"	133			2.4
ZRR 8282 xx	1 1/4"	1 1/4"	-	130	92	40°	2.2
ZRR 8284 xx	1 1/2"	1 1/4"	-	130			2.2
ZRR 8484 xx	1 1/2"	1 1/2"	-	130			2.4
ZRR 8686 xx	2"	2 1/2"	-	203	158	40°	8.0
ZRR 8888 xx	2 1/2"	2 1/2"	-	229			8.8

HOW TO MAKE UP THE  
PRODUCT CODE

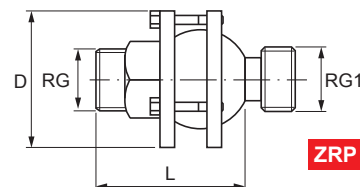
EX.: ZRQ 8080 B1

ZRQ 8080 xx

- OUTLET THREAD SIZE
  - 80 - 1"
  - 82 - 1 1/4"
  - 84 - 1 1/2"
  - 86 - 2"
  - 88 - 2 1/2"
- INLET THREAD SIZE
  - 80 - 1"
  - 82 - 1 1/4"
  - 84 - 1 1/2"
  - 86 - 2"
  - 88 - 2 1/2"
- JOINT TYPE
  - ZRQ - Female
  - ZRR - Male
- MATERIAL
  - B1 - AISI 303 Stainless steel
  - B3 - AISI 316 Stainless steel
  - T1 - Brass



ZRQ



ZRP

ZRQ  
Large capacity  
swivel joints

Flat fan nozzle

